



MODEL CM4600
OWNER'S MANUAL

www.curbroller.com
785-467-3132

Table of Contents

Introduction	1
Upon Receipt	1
Manufacturer's Notice	1
Specifications	2
Badger Curb Maker Package	2
Safety	3
Assembly	5
Operation	6
Preparing the Concrete for the Curb Maker	6
Preparing the Curb Maker	6
Operating the Curb Maker	7
Cleanup and Maintenance	8
Cleanup	8
Maintenance	8
Troubleshooting	8
Curb Maker Drum Does Not Spin	8
Curb Maker Is Hard To Pull	8
Curb Maker Will Not Stay On Forms	9
Access Door Won't Stay Closed	9
Frequently Asked Questions	9
What are the drums made out of?	9
Can I pour just one curb shape with the Curb Maker?	9
What drives the Curb Maker?	9
Can I use the Curb Maker for catch or spill curb?	9
How do I change the direction of the Curb Maker?	10
How do I adjust the speed of the Curb Maker?	10
Can I change the drum profile on a Curb Maker?	10
Can the Curb Maker power curb and gutter drums?	10
Can the Curb Maker be converted to a roller screed?	10
Parts	11
Curb Maker Warranty	17
Unit Identification	19

Introduction

Congratulations on your purchase of the Badger Curb Maker.

The Curb Maker is proudly manufactured in the USA by Curb Roller Manufacturing. The Curb Maker has been manufactured to provide years of service.

Before using the Curb Maker you must read and follow this manual for proper use and set up. You must also read the DeWalt DCD460 manual.

Upon Receipt

Carefully examine your equipment upon receipt to verify all the components of your order have been shipped to you and arrived undamaged. Report any damage immediately to the freight carrier and register any claim. If any material or manufacturing defects are discovered, contact a Curb Roller Mfg. representative at 785-467-3132.

Manufacturer's Notice

Information provided in this manual was current as of the issue date. Curb Roller Mfg. reserves the right to make design changes without notice or liability.

Information furnished in this manual does not include all of the details of design, production, or variations of the equipment. It does not cover all of the possible contingencies which may emerge during operation. If special problems arise or further information is desired, please contact a Curb Roller Mfg. representative at 785-467-3132.

This owner's manual does not replace, nor does its use release the owner/operator from observing all safety codes or operating limitations as well as any applicable federal, state, provincial or local regulations.

Specifications

Length

28" (711 mm)

Width

32" (813 mm)

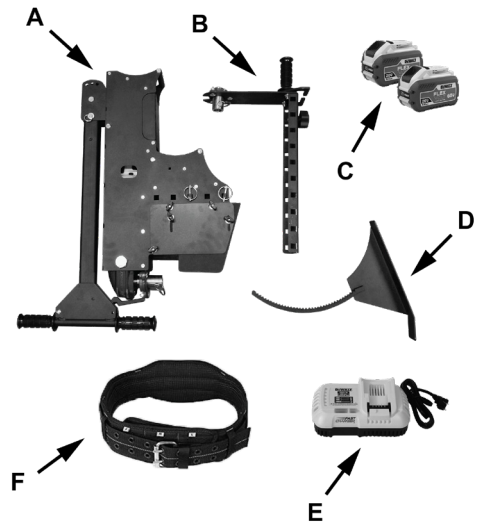
Weight

105 lbs (48 kg)

Badger Curb Maker Package

This package includes:

- A. Drive Unit
- B. Idle Frame Assembly
- C. Two (2) DeWalt Batteries
- D. Adjuster Boot
- E. DeWalt FLEXVOLT Charger
- F. Operator's Belt



* Drums for the Badger Curb Maker are sold separately. To order, contact Curb Roller Manufacturing or Dealers in the Curb Roller Manufacturing network.

Safety

Before assembling and operating this equipment you must read, understand, and follow the instructions and safety warnings in this manual.

If you have any safety concerns or questions that are not covered in this manual, please contact a Curb Roller Mfg. representative at 785-467-3132.

WARNING

Failure to read and obey the following safety warnings may result in serious injury or death.

WARNING

The use of the Badger Curb Maker may be hazardous. The Curb Maker has rotating parts and lithium-ion battery power.

WARNING

Do not alter, change, or modify the Curb Maker. Altering, changing, or modifying the equipment may cause unsafe conditions or damage the equipment, and may void the manufacturer's warranty.

WARNING

Observe all federal, state, provincial, and local safety codes and regulations that apply to the job site.

WARNING

Personal Protective Equipment (PPE) must be worn to operate the Curb Maker. Necessary PPE for this machine includes safety glasses, steel toed boots, gloves, ear protection, and hardhat.

WARNING

Individuals under the age of eighteen should not operate the Curb Maker.

WARNING

Do not operate, work on/or around this machine while under the influence of alcohol, drugs, or if feeling ill.

WARNING

Never attempt to clean or service the Curb Maker while machine is running.

⚠ WARNING

Always clean, maintain, and transport the Curb Maker with the batteries removed from the drill to avoid accidental rotation.

⚠ WARNING

The Curb Maker is designed to run with the drill on low speed. Do not under any circumstance take apart the drive unit and change the speed on the drill.

⚠ WARNING

Do not install battery until the Curb Maker is in place ready to run.

⚠ WARNING

Make sure all bystanders around the machine are aware the drum is about to spin.

⚠ WARNING

Entanglement Hazard. Keep away from moving parts.

⚠ WARNING

Do not wear loose clothing. Long hair must be tied back or netted.

⚠ WARNING

Do not wear jewelry, headsets with dangling wires, or coats with dangling hood strings.

⚠ WARNING

Never operate machine with missing guards, shields, bolts, pins, or any missing part.

⚠ WARNING

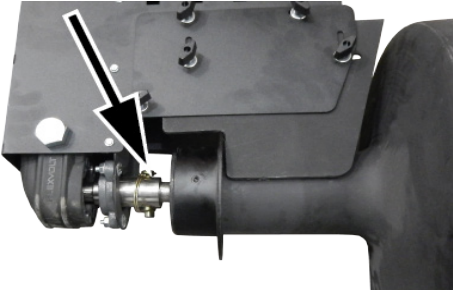
The Curb Maker weighs approx 160 lbs. (48 kg.) with a drum installed. Plan a safe handling procedure before lifting. Individuals should not attempt to lift the Curb Maker alone.

⚠ WARNING

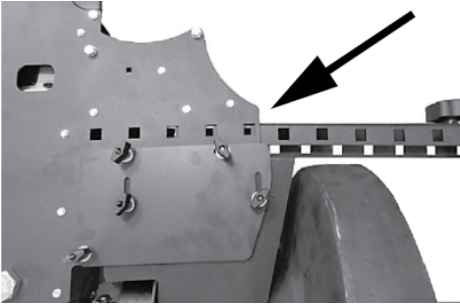
Before each use inspect all moving parts for concrete or other debris that can hinder operation.

Assembly

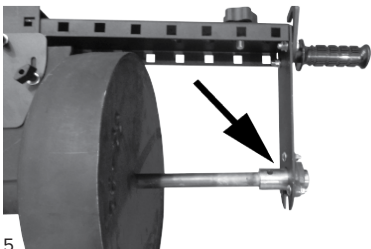
1. Pin the drum shaft into the drive unit's chuck.



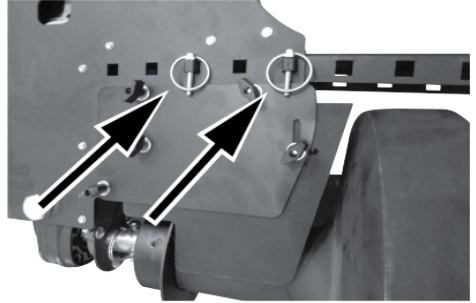
2. Slide the idle frame assembly into the drive unit.



3. Verify that the idler bearing on the idle frame assembly slips over the end of the drum shaft opposite the chuck.

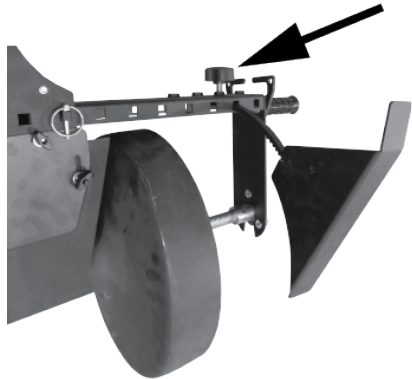


4. Use the two black pins and snap rings to fasten the idle frame assembly into the drive unit.



5. Pin the drum shaft opposite from the chuck through the idler bearing.

6. Fasten the adjusting boot into the idle frame assembly with the threaded knob.



Operation

Preparing the concrete for the Curb Maker

1. Make sure the tops of the stakes and pins used to support the form board are below the top of the form board.
2. Pour concrete against the form board as if the curb were to be hand formed.
3. Form concrete as close as possible to the shape of the curb with rakes.
4. Make sure the top of the form board is free of concrete.

Preparing the Curb Maker

1. Move the Curb Maker to the pour site.
2. Remove pin from the handle and fold out away from the drive unit. Replace pin when handle is in the desired operating position.



3. Open access door and insert the battery into the drive unit.



4. Grasp both handles and squeeze the trigger gently to determine the spin direction of the drum. The drum should be turning away from the operator.
5. If the drum is not spinning away from the operator, fully depress the directional button.
6. Verify the drum sweep is on the top side of the drum neck.

Operating the Curb Maker

1. Place the Curb Maker on the edge of the form with the guide ring running along the inside edge of the form.
2. Place belt around the operator's waist and adjust size as needed. Place loops over the Curb Maker's handles.
3. Squeeze the trigger to begin drum rotation.
4. Slowly walk backwards to begin screeding. Ensure the drum is spinning in the opposite direction that it is being pulled.
5. Maintain a small amount of concrete in front of the drum and up against the drum sweep. If more than two inches of concrete builds up in front of the drum it must be raked away by a second person.
6. Use the adjusting boot to adjust depth while screeding.

Cleanup and Maintenance

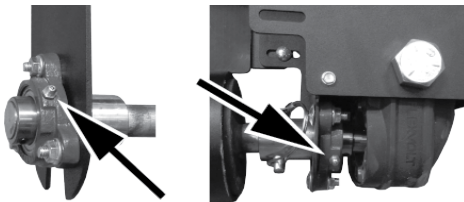
Cleanup

1. Move the Curb Maker away from poured concrete.
2. Remove all concrete from the Curb Maker with a garden hose or pressurized water supply.
3. Dry concrete may be gently removed using a scraper or similar tool.

Maintenance

Charge all batteries before each use.

Grease drum bearings before each use.



Troubleshooting

Curb Maker Drum Does Not Spin

- Check the battery by pressing the indicator button
- Check the pin that connects the drum shaft to the drive chuck
- Check trigger and linkage for bent parts or concrete build up.
- Remove battery and reinsert.
- Check directional button and make sure it is pressed all the way in.

Curb Maker Is Hard To Pull

- The Curb Maker comes with an operator's belt. The belt reduces the difficulty of pulling the machine.
- Concrete may be too dry or a difficult mix to screed. See the ideal mix information.

Curb Maker Will Not Stay On Forms

- Verify that all stakes and pins are below the top of the form.
- Check the amount of concrete in front of the machine. Make sure there is no more than two inches of excess.

Access Door Won't Stay Closed

- Tighten door bolt.

Frequently Asked Questions

What are the drums made out of?

Curb Maker drums are made out of steel. The average life of a drum is 40 to 60,000 linear feet.

Can I pour just one curb shape with the Curb Maker?

The Curb Maker can be purchased with any of our stocked drum styles or a custom fabrication for specific jobs.

What drives the Curb Maker?

The Curb Maker runs off of one DeWalt FLEXVOLT battery. One battery should power the Curb Maker to pour 150-200 linear feet of curb.

Can I use the Curb Maker for catch or spill curb?

A standard curb drum can be used to pour catch or spill curb with the heights being adjusted by the operator.

How do I change the direction of the Curb Maker?

The direction of the drum is changed with the directional button on the drill. When switching directions, you must also swap the drum sweep to the other side. The drum sweep should always be on the top side of the drum.

How do I adjust the speed of the Curb Maker?

The speed is adjusted the same as most cordless power tools- by how much you squeeze the trigger. If the trigger is squeezed to the fullest extent, the drum will go full speed. If the trigger is barely squeezed, the drum will move slowly.

Can I change the drum profile on a Curb Maker?

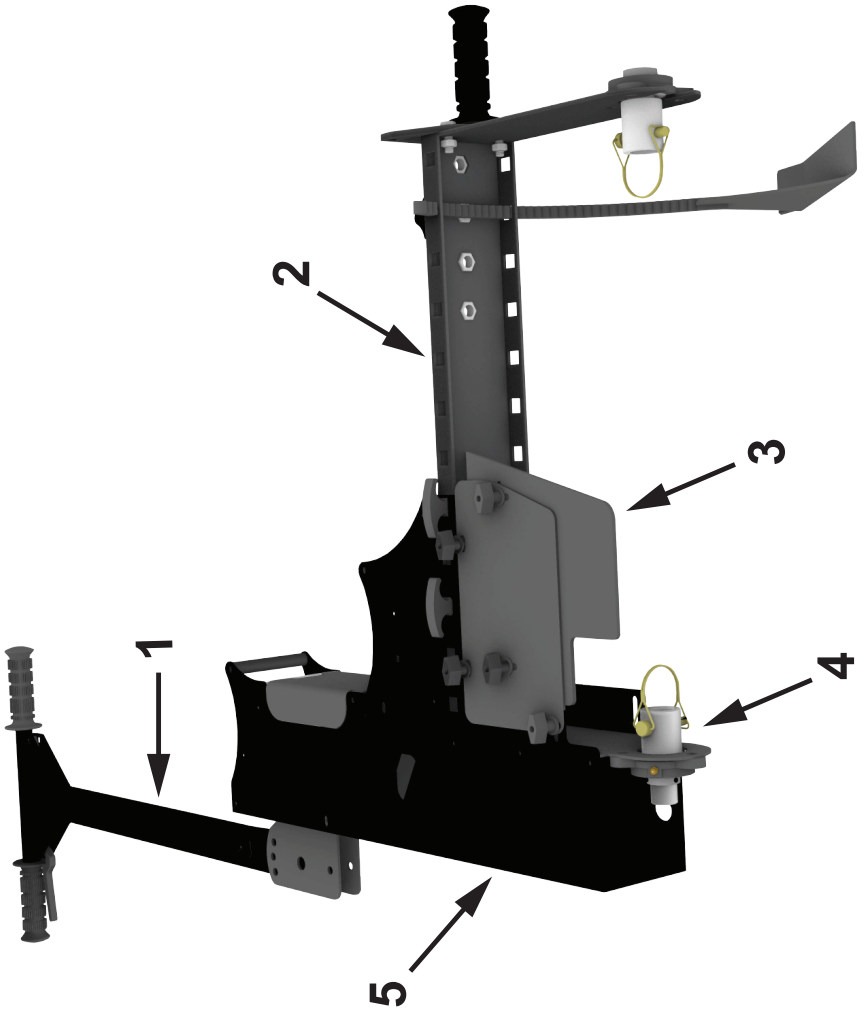
The Curb Maker is designed to easily adapt between different curb profiles by changing the drums attached to the main frame.

Can the Curb Maker power curb and gutter drums?

No. The Curb Maker is designed for curb only drums.

Can the Curb Maker be converted to a roller screed?

No. The Curb Maker should only be used with a curb-only drum.



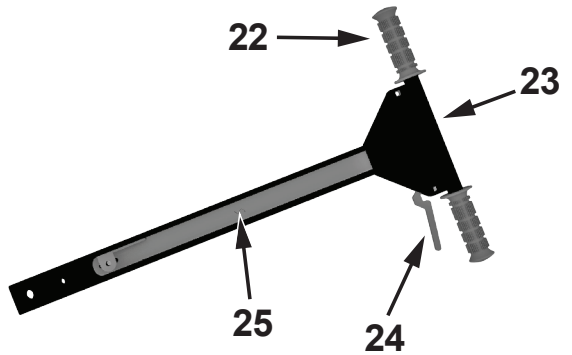
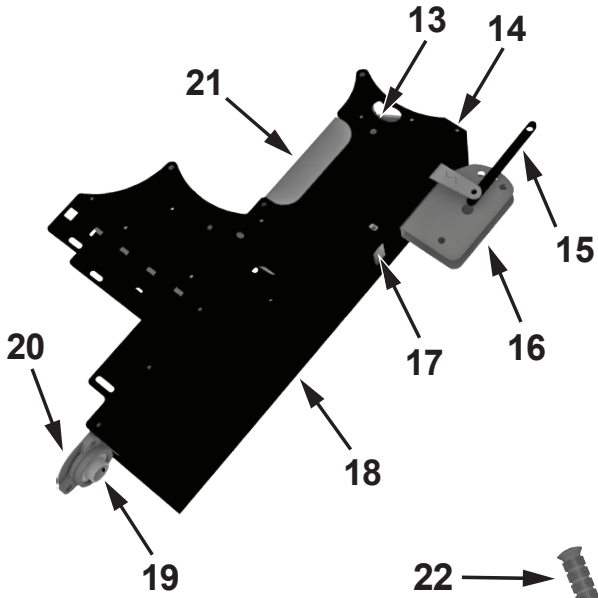
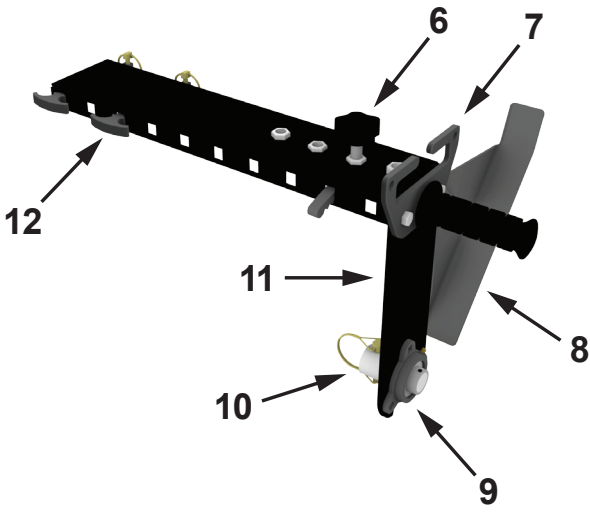
Parts

No.	Qty.	Description	Part No.
1	1	Handle Assy- Control	40563-001
1	1	Pin-Detent, 3/8" x 1-1/2"	1001-055
1	1	Pin-Clevis, 5/8" x 1-1/2"	1001-351
2	1	Frame Assy-Idle, CrbMkr 4600	40561-001
3	1	Sweep Assy-Long, CM4000	40506-001
4	1	Drive Assy-CrbMkr 4600	40562-001
5	1	Frame Assy-Main Drive, CrbMkr 4600	40560-001

Items Not Shown

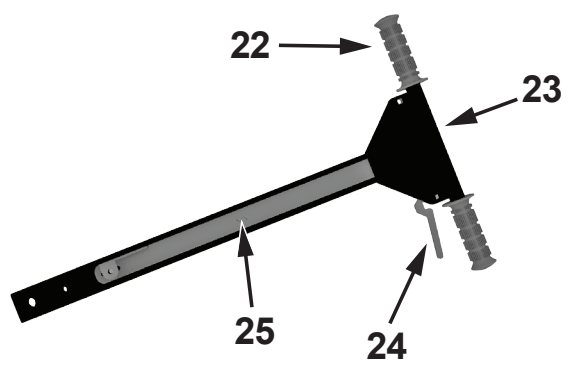
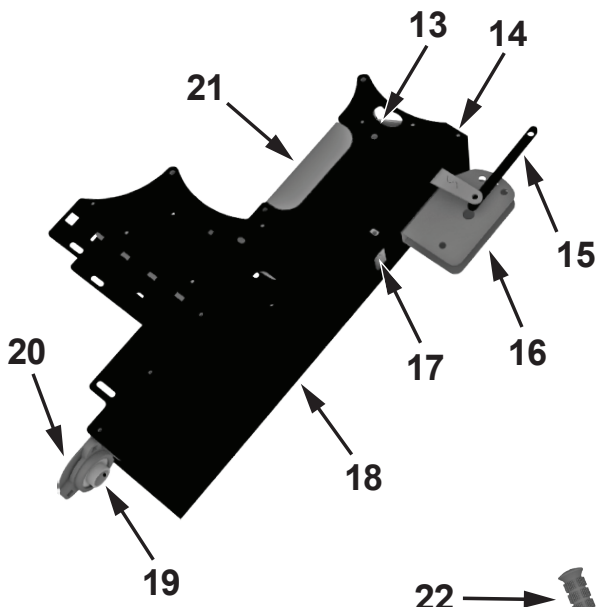
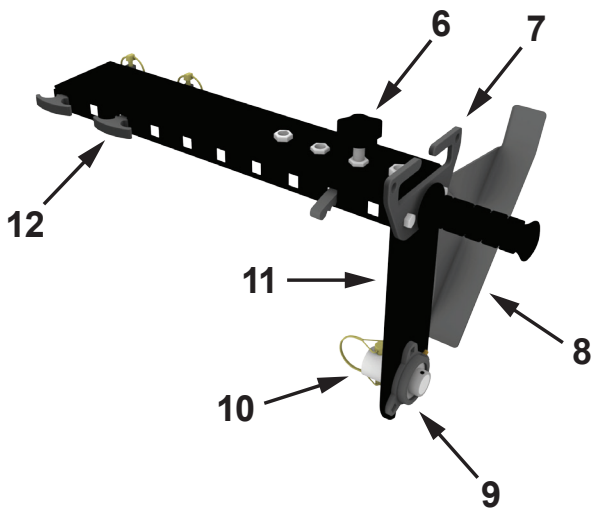
	Qty.	Description	Part No.
	2	Batteries-12ah	1500-031
	1	Charger-120v	1500-051
	1	Operator Belt	40504-001

*Assembly items broken down on following pages



Parts

No.	Qty.	Description	Part No.
6	1	Knob-Star, Soft (1/2"-13 x 1-1/4" Lg)	1021-121
7	1	Handle Assy-Lift, Auxiliary	40517-001
8	1	Boot Wdmt-Bionic, CrbMkr 4600	40042-001
9	1	Bearing-Flgd, 3-Bolt, 1" ID	1147-001
9	3	Bolt-Crge, 5/16"-18 UNC x 1", Zc Pltd	313-004
9	3	Nut-Lock, Srrtd Flg, 3/8"-16 Unc, Zc Pltd	105-103
10	1	Chuck-Drive	1356-001
11	1	Sprt Wdmt-Brg, Idle, CrbMkr 4600	40037-001
12	2	Pin-Cnctng, CrbMkr 4600	40038-001
12	2	Pin-Lynch, 1/4" x 1-1/4", Zc Pltd	1001-704
13	1	Cover-Top	1384-001
13	22	Screw-Self Tap, HWH, #10 x 3/4", Zc Pltd	151-019
14	1	Arm-Pivot	1386-001
15	1	Arm-Link, Speed Control	1380-001
16	1	Bracket Wdmt-Positioning	1331-001
16	3	Bolt-Crge, 5/16"-18 UNC x 1", Zc Pltd	313-004
16	6	Nut-Lock, Srrtd Flg, 3/8"-16 Unc, Zc Pltd	105-103
17	4	Bar-Rd (5/8" x 4-1/4")	1393-001
17	8	Bolt-HXH, 0.313" - 18 x 3/4", Zc	311-003
17	8	Washer-Flat, 5/16",USS, Zc	101-178
18	1	Housing-Main	1382-001
18	1	Bolt-HXH, 7/8-9 x 1.00	881-167
19	1	Bearing-Flgd, 3-Bolt, 1" ID	1147-001
19	3	Bolt-Crge, 5/16"-18 UNC x 1", Zc Pltd	313-004
19	6	Nut-Lock, Srrtd Flg, 3/8"-16 Unc, Zc Pltd	105-103
20	1	Bearing Spt-Drive	1383-001
20	22	Screw-Self Tap, HWH, #10 x 3/4", Zc Pltd	151-019
21	1	Access Door-Bttry	1385-001
21	2	Bolt-HXH, 0.250"-20 x 3/4", Zc	251-003
21	2	Nut-Nylock Hx, 1/4" -20, Zc	119-107
22	2	Grip-Handle, Rbbr, 1" ID x 1.63" OD x 4.75 OAL	1143-001
23	1	Handle Wdmt-Control, CrbMkr 4600	40043-001



Parts

No.	Qty.	Description	Part No.
24	1	Lever-Vrble Spd	1391-001
24	1	Bolt-Crge, 1/4"-20 UNC x 1-1/4", Zc Pltd	253-005
24	1	Nut-Lock, Srrtd Flg, 1/4", Zc Pltd	105-101
25	1	Slide	1392-001
25	1	Bolt-Shldr, Allen, 5/16" ODx3/8", 1/4"-20 Unc	155-064
25	1	Washer-Nylon, 5/16", 0.34"ID x 0.88"OD x 0.06 Thk	101-522
25	1	Nut-Nylock Hx, 5/16"-18, Zc	119-108

Curb Maker Warranty

Curb Roller Mfg. warrants to the original purchaser that this product will be free from defects in material and workmanship.

Curb Roller Mfg. agrees to repair or replace, at manufacturer's discretion, any defective product free of charge within one year from the date of purchase.

Curb Roller Mfg. must authorize all work and returns prior to any work being performed or returns made. If the customer does perform work and makes a return without authorization, the customer does so with the understanding that Curb Roller Mfg. or any of its agents shall not be obligated for the cost of any such unauthorized expenses or actions.

Proof of purchase in the form of your dated sales receipt showing serial number and the model of the product will be required before our dealers can perform warranty service on the product.

All allowances will be credited at factory cost with no provisions for overtime, travel time, mileage, freight charges, or special services (i.e. down time).

The purchaser of any goods covered by this warranty

understands and agrees that the sole and exclusive remedy against Curb Roller Manufacturing shall be for the replacement or repair of defective goods as provided herein.

Machine is warranted for a period of one (1) year after date of original purchase to original purchaser.

Batteries are warranted for a period of three (3) years after date of original purchase to original owner.

NOTICE

Curb Roller Manufacturing product warranty shall not extend or apply to:

1. Defects which in our judgment are the result of misuse, negligence, accident, or failure to perform regular maintenance or service, and any parts that may wear and need to be replaced.
2. Products and component parts not manufactured by Curb Roller Manufacturing beyond the warranty period provided by the original manufacturer or supplier.
3. Products improperly installed, maintained, or used not in accordance with all applicable

Curb Roller Manufacturing
instructions.

4. Goods or component parts that are modified or changed in any way other than by, or authorized by, Curb Roller Manufacturing.

Warranty questions or service information can be obtained from your dealer or by contacting Curb Roller Manufacturing at 785-467-3132 .

Please visit www.curbroller.com to register your product.

Unit Identification

An identification sticker listing the serial number is attached to each unit. This sticker should not be purposely removed at any time.

Please record your machine information below so it will be accessible should the identification sticker become lost or illegible.

When ordering parts or requesting service information, these details can help us process your inquiries faster.

Model Number: _____

Serial Number: _____

Date Purchased: _____

Purchased From: _____



Curb Roller Mfg., 112 South Main Street, Fairview, KS 66425
U.S. Patents: US8297878B2, US7621694B1, US10837147
US10844554, US10844555
© 2022