



Lynx Screed System

OWNER'S MANUAL

www.curbroller.com
785-467-3132

Congratulations on your purchase of the Lynx Screed System!

Curb Roller Manufacturing proudly manufactures the Lynx Screed System in the USA.

Before using the Lynx Screed System, read and follow this instruction manual for proper use and set up.

The Lynx Screed System can be used with the Batt Screed BS6000 or Eel Screed ES6100.

After removing packaging, inspect equipment for any damage that may have occurred during shipping. If any damage or defects are found please stop and take photos. Email photos to info@curbroller.com.

If you have safety concerns or questions that are not addressed in this manual please feel free to call us at 785-467-3132 or email at info@curbroller.com.

Curb Roller Manufacturing's patent pending roller screed pipe system supports different variations and lengths of roller screed pipes. This

change can be achieved easily with minimal tools and little effort.

Stainless steel spacers align the screed sections and provide convenient transport.

Stainless steel bolt on drive and idle ends will bolt on any end of any section of pipe.

Engineering Improvements and Changes

NOTICE

Curb Roller Mfg. is constantly improving on product quality and effectiveness. As a result, engineering changes and improvements will be made from time to time. Please note some changes or modifications may not be covered in this manual. If the operating characteristic or the appearance of your product differs from those described in this manual, please contact Curb Roller Mfg. for questions or assistance.

Set up and Operation

NOTICE

Before each use, inspect the screed for any damage. Always disconnect the drive unit when assembling or modifying the length of the screed to avoid accidental spinning.

NOTICE

Assembly and disassembly are quick and easy using two box-end wrenches. Make sure the ends of the pipes are clean and all debris is removed.

NOTICE

Place stainless steel spacer between the two sections of pipe and tighten bolts equally.

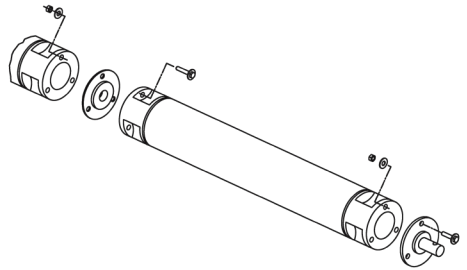
NOTICE

Make sure all connections are tight and all bolts are in place before attaching to the drive unit.

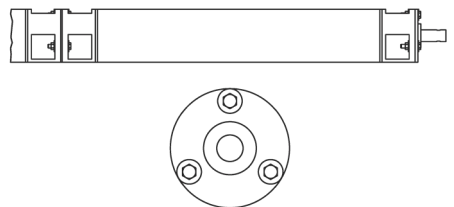
NOTICE

After screeding is complete, clean all concrete off the screed pipe taking extra care to clean the bolt pockets.

1. Inspect system for missing or damaged parts.
2. Determine width of pour and select pipe lengths allowing for at least 6" overhang on each side of the forms.
3. Place all pieces on a flat surface. Inspect all faces for excess debris.
4. Insert bolts into one side of the connection and slide stainless steel spacer on the bolts.



5. Pull both ends together and put nuts on the bolts and tighten equally.



6. Repeat step five until all bolts on the connection joints are tight.
7. Bolt both stainless ends onto the pipe.
8. Connect drive and static ends to the screed and place on forms.

