



MODEL HP1300

OWNER'S MANUAL

www.curbroller.com

785-467-3132

Congratulations on your purchase of the Hydra-Pack!

Curb Roller Manufacturing proudly manufactures the Hydra-Pack HP1300 in the USA.

Before using the Hydra-Pack HP1300 you must read and follow this instruction manual for proper use and set up.

The Hydra-Pack HP1300 has been designed and manufactured to provide many years of service.

NOTICE

Carefully examine your equipment upon receipt. Report any damage immediately to the freight carrier and register any claim. If any material or manufacturing defects be discovered, contact a Curb Roller Manufacturing representative.

NOTICE

Information provided in this manual was current as of the issue date. Curb Roller Manufacturing reserves the right to make design changes without notice or liability.

Information furnished in this manual does not include all of the details of design, production, or variations of the equipment. It does not cover all of the possible contingencies which may emerge during operation. If special problems arise or further information be desired, please contact Curb Roller Manufacturing.

⚠ WARNING

Equipment modifications from original design and specifications are strictly prohibited. Modifications may compromise safe operation, subjecting users to serious injury or death. Modifications not authorized by a Curb Roller Manufacturing representative may void any remaining warranty.

NOTICE

Curb Roller Manufacturing reserves the right to change, improve, modify, or expand features of this equipment at any time. Specifications, models, or equipment are subject to change without notice and without incurring any obligations to change, improve, or expand features of previously delivered equipment. Because of the variations in optional equipment and continued design improvement, certain information contained within this manual may not apply.

The owner/operator of this equipment must observe all safety codes or operating limitations listed herein, as well as any applicable federal, state, provincial, or local regulations.

Safety

Before assembling and operating this equipment you must read, understand, and follow the instructions and safety warnings in this manual. Your Hydra-Pack may not be equipped with some of the optional equipment shown in the illustrations in this manual.

If you have any safety concerns or questions that are not covered by this manual, please contact a Curb Roller Manufacturing representative at 785-467-3132.

Hazards

⚠ WARNING

Do not operate, work on or around this machine while under the influence of alcohol, drugs, or if feeling ill.

⚠ WARNING

Entanglement hazard. Keep away from moving parts. Do not wear loose fitting clothing. Loose fitting clothing and long hair can become entangled in moving or rotating parts. Long hair must be tied back or netted.

⚠ WARNING

Never operate machine with open or missing guards or shields.

⚠ WARNING

Observe all federal, state, provincial, and local safety codes and regulations that apply to the job site.

⚠ WARNING

Pressurized fluids can penetrate the skin. Hydraulic hoses can fail from age, damage, or exposure. Do not search for hydraulic leaks without body and face protection. A tiny, almost invisible leak can penetrate the skin thereby requiring immediate medical attention.

Use wood or cardboard to detect hydraulic leaks. Never use your hands.

⚠ WARNING

The engine exhaust from this product contains chemicals known to the state of California to cause cancer, birth defects, or other reproductive harm.

⚠ WARNING

Engine exhaust contains poisonous carbon monoxide. Do not operate the Hydra-Pack in an enclosed or confined area.

Avoid areas and actions that expose you and others to carbon monoxide.

Specifications

Hydraulic Reservoir Capacity
11 gal. (41.6 l)

Hydraulic Flow*
7 gpm (26.5 lpm)

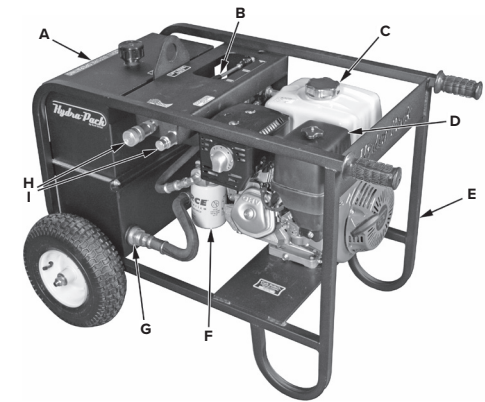
Maximum Hydraulic Pressure
2300 psi (158.6 bar)

Oil Filtration
10 Micron

*Dependent on engine RPM

Equipment Identification

- A. Hydraulic Oil Reservoir
- B. Directional Valve
- C. Engine Fuel Tank
- D. Engine Air Filter
- E. Cart
- F. Hydraulic Oil Filter
- G. Hydraulic Oil Suction Strainer
- H. Female Hydraulic Coupler
- I. Male Hydraulic Coupler

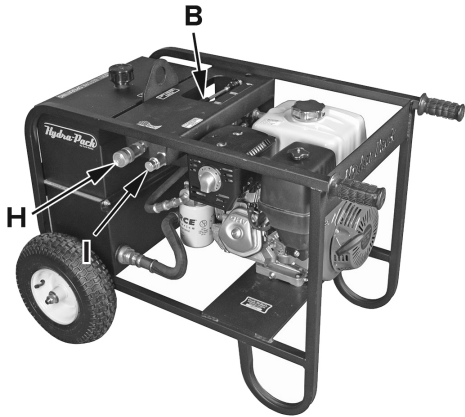


Operation

⚠ WARNING

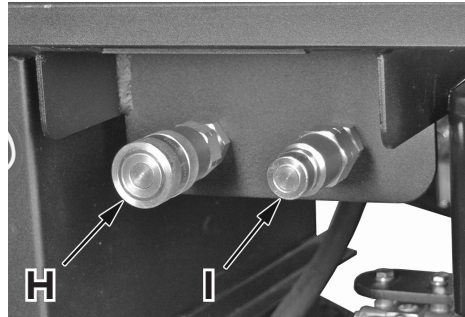
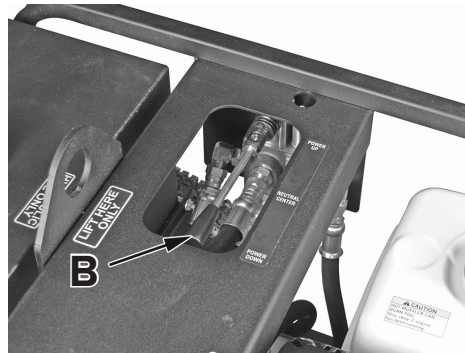
Prevent injury. Verify directional valve is in neutral position before connecting hydraulics.

1. Read and understand the engine manufacturers' operators manual before using the Hydra-Pack.
2. Check hydraulic oil level in reservoir. Add hydraulic oil if necessary.
3. Verify directional valve (B) is in center neutral position.
4. Connect hydraulic hoses to the hydraulic couplers (H & I).



5. Start and operate engine per guidelines in engine operator's manual.

6. Set engine throttle to max position.
7. Move directional valve (B) down to send pressure oil through female coupler (H). Move directional valve up to send pressure oil through male coupler (I).



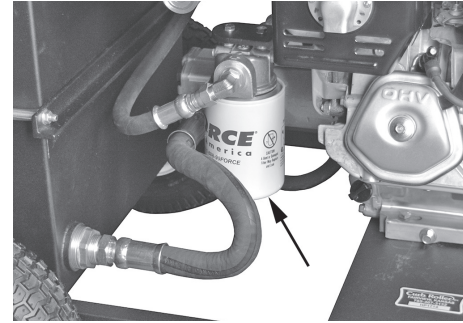
8. Move directional valve (B) to center neutral position to stop pressurized oil flow.

Maintenance

NOTICE

Change hydraulic oil filter every 300 hours.

1. Stop engine.



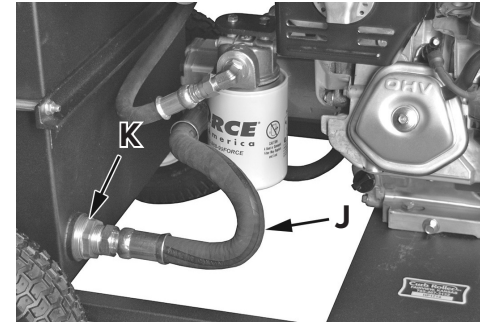
2. Place a drain pan under filter.
3. Remove and replace filter.
4. Refill hydraulic oil reservoir to proper level.
5. Dispose of oil in an environmentally safe manner.

NOTICE

Change hydraulic oil every 600 hours/annually.

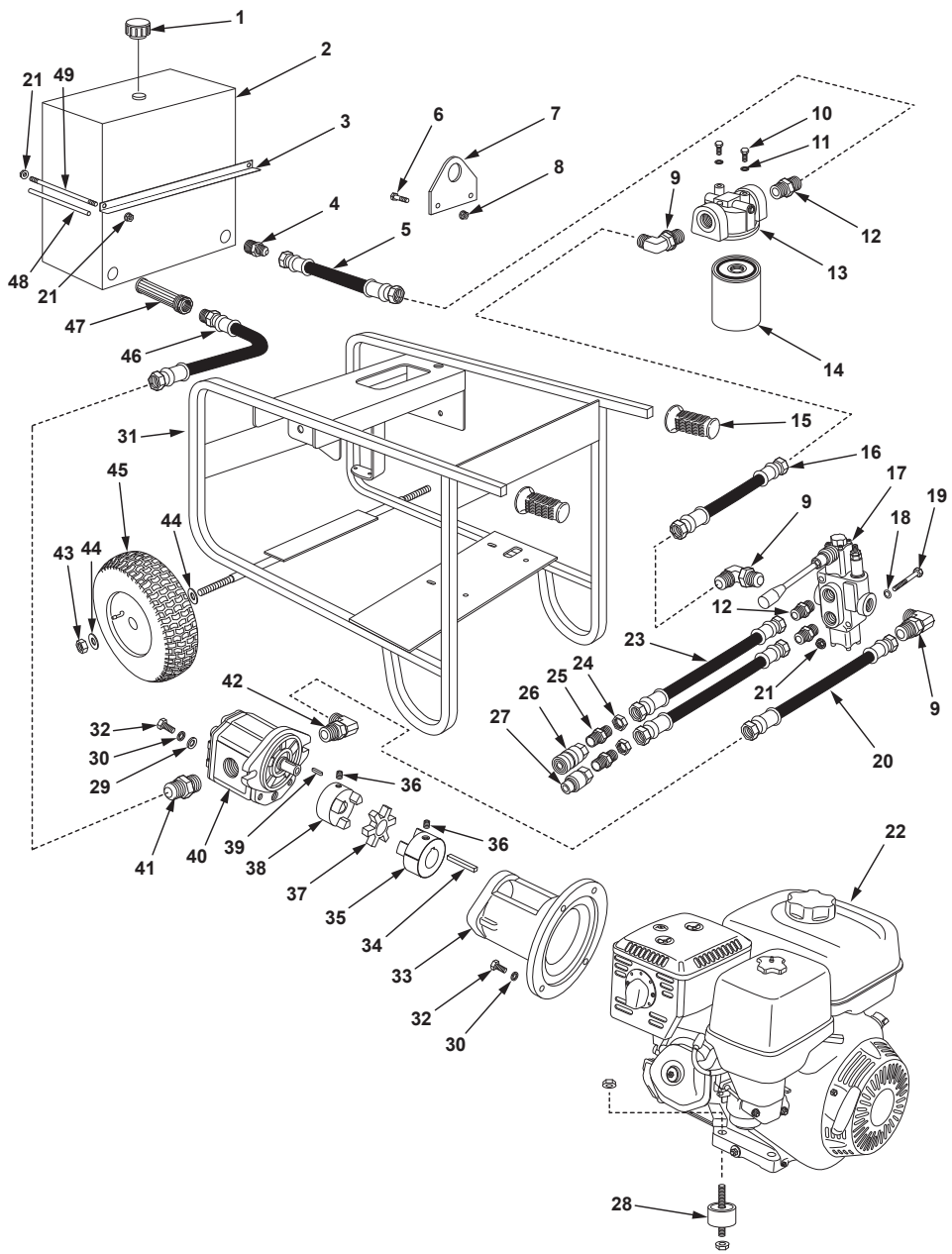
1. Stop engine.
2. Place a drain pan under suction strainer.

3. Remove hose (J) to drain oil.
4. Remove, inspect, and clean suction strainer (K). Replace suction strainer if damaged.



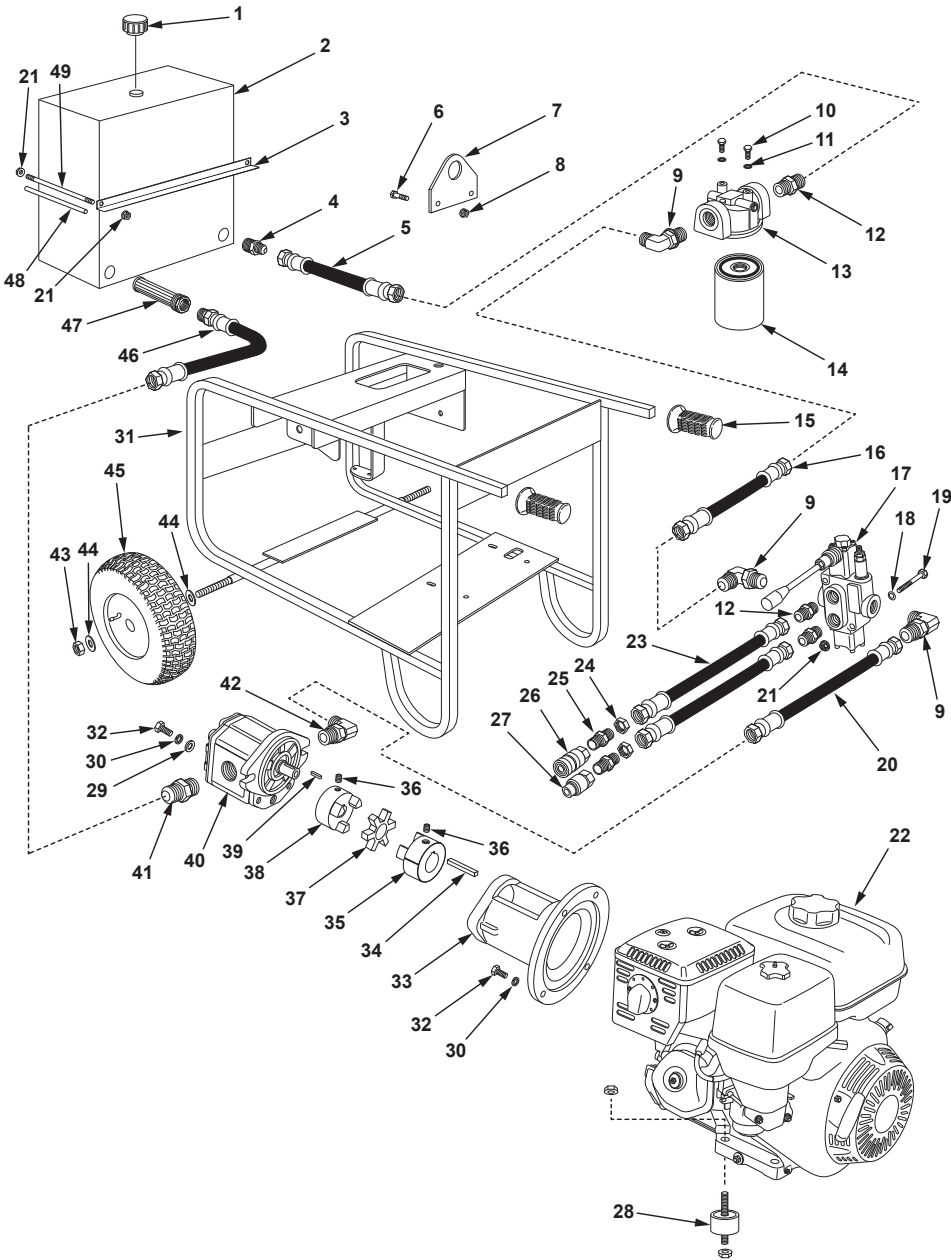
5. Install suction strainer (K) and connect hose (J).
6. Refill hydraulic oil reservoir to proper level.
7. Dispose of oil in an environmentally safe manner.

Parts



No.	Qty.	Description	Part No.
1	1	Breather Cap With Dipstick	1143-501
2	1	Hydraulic Reservoir	13010-001
3	1	Tank Brace	13002-001
4	1	Fitting, 8 M JIC x 3/4 M NPT Connector, 37° Flare, Male	1221-124
5	1	Hydraulic Hose, 08U-608-608, 18 Inch	17105-007
6	2	Hex Bolt, 3/8 x 3/4 Inch	383-504
7	1	Lift Bracket	13001-001
8	2	Flange Nut, 3/8 Inch	105-103
9	3	Fitting, 90 Degree Elbow Male JIC-8 Male SAE	1211-037
10	2	Hex Bolt, 1/4 x 3/4	251-003
11	2	Lock Washer, 1/4 Inch	103-107
12	3	Fitting, 08M JIC to 08M SAE	1213-006
13	1	Hydraulic Oil Filter Housing	1143-911
14	1	Hydraulic Oil Filter	1143-901
15	2	Grip	1143-001
16	1	Hydraulic Hose, 08U-608-608, 21 Inch	17105-005
17	1	Valve, Single Spool With 3-Position Detent	1501-051
18	1	Manual	19001-007
19	2	Hex Bolt, 5/16 x 2-1/2 Inch	313-510
20	1	Hydraulic Hose, 08U-608-608, 23 Inch	17105-003
21	6	Flange Lock Nut, 1/4 Inch	105-102
22	1	Engine	1503-001
23	2	Hydraulic Hose, 08U-608-608, 13 Inch	17105-009
24	2	Bulkhead Lock Nut, 3/4-16 Female JIC 37 Degree	1209-024
25	2	Fitting, 1/2 Male Pipe x 1/2 Bulkhead Male JIC	1209-006
26	1	Hydraulic Coupler, Female	1205-002
27	1	Hydraulic Coupler, Male	1205-022
28	1	Engine Mount Kit	1145-071
29	6	Flat Washer, 5/16 Inch	101-109
30	4	Lock Washer, 3/8 Inch	103-109
31	1	Frame	13000-001
32	6	Hex Bolt, 3/8 x 1-1/4 Inch	383-505

Parts



No.	Qty.	Description	Part No.
33	1	Pump Mount	1503-021
34	1	Key, 1/4 x 1-1/2 Inch	1023-101
35	1	Coupling, 1 Inch Shaft	1201-101
36	2	Set Screw	071-040
37	1	Spider, Rubber	1201-301
38	1	Coupling, 5/8 Inch Shaft	1201-001
39	1	Round Nose Key	1023-303
40	1	Hydraulic Pump	1502-001
41	1	Fitting, SAE 12m To JIC 12m	1221-124
42	1	Fitting, 90 Degree Elbow 3/4-16m JIC x 7/8-14m O-Ring	1213-007
43	2	Nylock Nut, 5/8 Inch	119-113
44	4	Flat Washer, 5/8 Inch	102-012
45	2	Tire, 13-5.00-6, Includes Rim and Tube	1141-001
46	1	Hydraulic Hose, 2014-12-12U-612-116, 31 Inch	17109-001
47	1	Suction Strainer, 1-1/2 x 1 Inch	1143-051
48	2	Protector Sleeve For #49	13003-001
49	2	All Thread Bolt, 5/16 x 10 Inch	249-032
NS	1	Decal Kit	19000-007

Hydra-Pack HP1300 Warranty

Curb Roller Manufacturing warrants to the original purchaser that this product will be free from defects in material and workmanship.

Curb Roller Manufacturing agrees to repair or replace, at manufacturer's discretion, any defective product free of charge within three years from the date of purchase.

Curb Roller Manufacturing must authorize all work and returns prior to any work being performed or returns made. If the customer does perform work and makes a return without authorization, the customer does so with the understanding that Curb Roller Manufacturing or any of its agents shall not be obligated for the cost of any such unauthorized expenses or actions.

Proof of purchase in the form of your dated sales receipt showing serial number and the model of the product will be required before our dealers can perform warranty service on the product.

All allowances will be credited at factory cost with no provisions for overtime, travel time, mileage, freight charges, or special services (i.e. down time).

The purchaser of any goods covered by this warranty understands and agrees that the

sole and exclusive remedy against Curb Roller Manufacturing shall be for the replacement or repair of defective goods as provided herein.

Machine is warranted for a period of three (3) years after date of original purchase to original purchaser.

NOTICE

Curb Roller Manufacturing product warranty shall not extend or apply to:

1. Defects which in our judgment are the result of misuse, negligence, accident, or failure to perform regular maintenance or service, and any parts that may wear and need to be replaced.
2. Products and component parts not manufactured by Curb Roller Manufacturing beyond the warranty period provided by the original manufacturer or supplier.
3. Products improperly installed, maintained, or used not in accordance with all applicable Curb Roller Manufacturing instructions.

4. Goods or component parts that are modified or changed in any way other than by, or authorized by, Curb Roller Manufacturing.

Warranty questions or service information can be obtained from your dealer or by contacting Curb Roller Manufacturing at 785-467-3132 .

Please visit www.curbroller.com to register your product.



Curb Roller Mfg., 112 South Main Street, Fairview, KS 66425
Registered Trademarks: 87624718, 87855416

© 2020